



What's Happening

Jan 18 Diversity, Equity, & Inclusion (DEI) Team Meeting (6:30pm, virtual)

Jan 22 PTA General Meeting (6:00pm, library and zoom)

Feb 5 School Leader & Caregiver Coffee (8:00am, Library)

Feb 12 PTA Board Meeting (6:00pm, virtual)

Feb 15 Diversity, Equity, & Inclusion (DEI) Team Meeting (6:30pm, virtual)

February 19 - 23 No School for Mid Winter Break

[Full online calendar](#)

Join the PTA

[Join the PTA Today!](#)

Donate Now

[Donate](#) to the McDonald PTA fundraising campaign which funds our language immersion curriculum and other enrichment programs.

Visit the PTA Website

[For more news and events](#), including an archive of the [Mac's Notes](#), our [Principal's Newsletters](#).

Shop for Scottie Gear

Shop for [Scottie gear](#) anytime of the year!

Stay in Touch

[Follow us on Facebook](#)

Spread the Word

Do you know someone who should be getting McDonald news?

[Click here to forward this.](#)

[Unsubscribe](#)

Add or Edit Your Information for the School Directory

The PTA's communication team is working on putting together the 2023 - 2024 school directory. The directory is a great way to stay connected with families and find resources within the school.



If you wish to participate in the directory, please [use this link to add your information](#). If you were in the 2022 - 23 directory and do not need to update your information, you do **not** need to complete this request. Share only what information you feel comfortable being published. **Please complete the survey by Friday, February 2.**

Since Seattle Public Schools does not share contact information with the PTA, the PTA must collect this information directly from you. The directory will be shared via the class Google groups* and will never be published outside of our community.

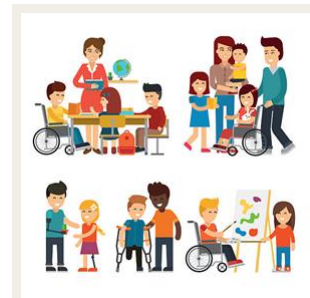
If you have further questions, please contact your PTA Communications Chairs: [Stephanie Rothfuss](#) and [Darrell Akana](#) at info@mcdonaldpta.org.

*Have you signed up for your class Google group? Here are those [sign-up instructions](#) if you need them.

McDonald Diversity, Equity, & Inclusion (DEI) Team Meeting

Thursday, January 18 at 6:30 pm
Virtual via Zoom: <https://zoom.us/j/99179974204>

Our awesome DEI team gathers together monthly to discuss a wide variety of concerns, needs, issues, and advocacy. We focus on bringing an equity perspective to McDonald events and activities, and providing opportunities for community engagement. Participation is open to all and you are welcome to join any meeting! We hope you can join us!



Please reach out to DEI@mcdonaldpta.org with any questions, and to be added to our Google group: mcd_deiteam@googlegroups.com
<https://mcdonaldpta.org/dei>

[2024 McDonald Open House \(School Tour\) Feb 6](#)

Don't need McDonald email?
[Click here to permanently unsubscribe.](#)

McDonald will offer 2 Japanese & 2 Spanish Kindergarten classes for the 2024 - 25 school year.



Open House:

Date: Tues, Feb 6, 6 - 7:00 p.m.
Location: McD Cafeteria
- Tour will be in English, Japanese, and Spanish
- Adults only as our cafeteria has limited capacity

Prior to the Open House, Japanese teachers are offering **Class Visitations (by appointment):**

Dates: Jan 18, 19, 23
Time: 8 - 9:00 a.m. for Kindergarten, 12 - 1:00 p.m. for 1st grade (other grades are also available upon request).

Contact Michiko Olson (K&1 teacher)
<mtolson@seattleschools.org> to reserve a spot.

◆ **We need your help!** ◆

Please help spread the word about our wonderful immersion program opportunity and share our flier with potential families and your friends/neighborhood community!

Flier: [English](#) | [Japanese](#) | [Spanish](#)

Mid-Winter Break Registration for Kids Co. Centers

Mid-Winter Break sign-ups will be available from Tuesday, January 16- Sunday, February 11, 2024



[Full Day Care information](#)

Care dates – Tuesday, February 20-Friday, February 23, 2024

Kids Co. is CLOSED Monday, February 19 for the holiday.

- Kids Co. will be open for care 8am-5pm
- Kids Co. will only offer care at the following locations: Adams, Cedar Park, Decatur, Graham Hill, Magnolia, **McDonald**, Queen Anne, South Shore and TOPS
- Families will need to pack a NUT-FREE lunch for their child.
- All centers will need a minimum enrollment of 10 kids per day to operate. **(Directors will let families know by Friday, February 2 if the center is unable to operate.)**
- All families will have until 2/11 to enroll or cancel, cancellations on or before 2/11 will be credited to your account. After 2/11, cancellations will no longer be accepted and there will be no credits/refunds to your account.
- To cancel, please [email the program director](#) directly.
- Please note: **cancellations after 2/11 will not be refunded** unless the center is unable to operate.
- If a center closes due to lack of enrollment, families will be notified no later than 2/2 with options available at other centers, space permitting.
- Break day camp costs \$55 per day and families must sign up for each day individually.

For currently enrolled families or families who have attended breaks, select the link [here](#) to register for Mid-Winter Break.

For NEW families who are not currently enrolled or have never attended a break camp, select the link [here](#) to register for Mid-Winter Break.

- Select the center you wish to attend
- Select Break Day Care option
- Select the days you'd like your child(ren) to attend.

Specific program information about what to expect over the break will be sent out the week of 2/12, from the program director managing the camp location. If you have any questions or run into any issues registering, please reach out.

Winter PTA General Meeting, Jan 22nd

Please join us **Monday, January 22nd from 6:00 - 7:30 p.m.** for our quarterly PTA General Meeting at the School Library and [Zoom](#). We will be voting on the fundsharing proposal and a nominating committee to recruit next school year's board.



Please [RSVP HERE](#) whether you are attending in person or via Zoom so we can plan accordingly.

Childcare will be provided. [CHILD CARE SIGN-UP](#) here by Jan 21st.

All families are welcome, but to vote you need to be a PTA member. You can [JOIN THE PTA](#) anytime and scholarships for joining are always available (email secretary@mcdonaldpta.org).

Do you have questions for the PTA? Complete this [survey](#) to let us know what you want us to discuss at the meeting.

Link to [draft agenda](#).

Nominating Committee for the 2024-2025 PTA

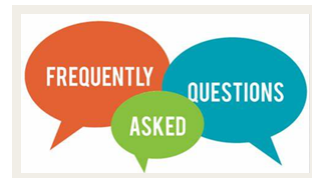
We will elect the Nominating Committee at the upcoming PTA General Meeting on January 22, 2024. The Nominating Committee is responsible for identifying the candidates for the PTA Executive Committee positions (President, Vice-President, Treasurer & Secretary). These candidates will be elected at the final PTA General Meeting on April 29.



Questions? Interested in serving on the committee? Please email vp@mcdonaldpta.org

Fundsharing FAQ

Thanks to all who came to our Fundsharing Q&A back in December. The McDonald DEI Team has prepared an FAQ to share with you all based on the questions that community members



have asked: [Fundsharing FAQ - Google Docs](#).

We are planning to vote on the fundsharing proposal at the upcoming PTA General Meeting on Jan 22nd.

McDonald Elementary

[McDonald PTA Website](#) | [On Facebook](#) | [Forward this Email](#)